



**8 eightcap**

---

**Gravity Indicator**



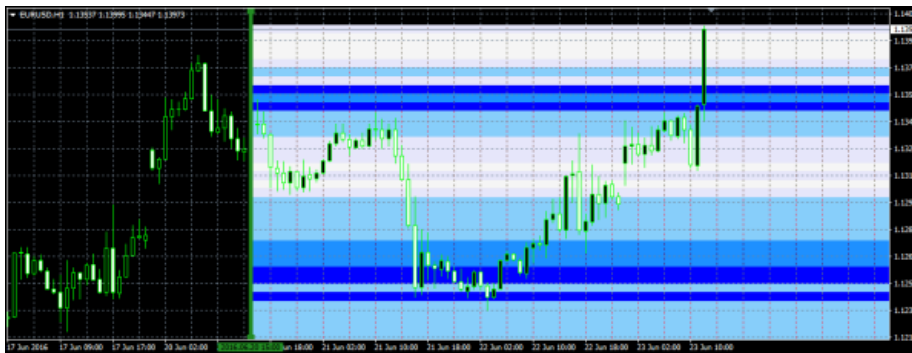
## Table of Contents

<b>1.</b>	<b><i>Overview</i></b> .....	<b>2</b>
<b>2.</b>	<b><i>Using the Gravity indicator</i></b> .....	<b>2</b>
<b>2.1</b>	<b>Adding the indicator to a chart</b> .....	<b>2</b>
<b>2.2</b>	<b>Choosing the colours</b> .....	<b>3</b>
<b>2.3</b>	<b>Time period</b> .....	<b>3</b>
<b>2.4</b>	<b>Start date</b> .....	<b>3</b>

## 1. Overview

The Gravity indicator shows areas of possible support and resistance based on previous price action, colour-coded to show areas of stronger and weaker market activity.

It can either just draw from the current time onwards, using all the price activity to date, or you can set a specific [start time](#) in order to test the indicator or to ignore recent price movements.

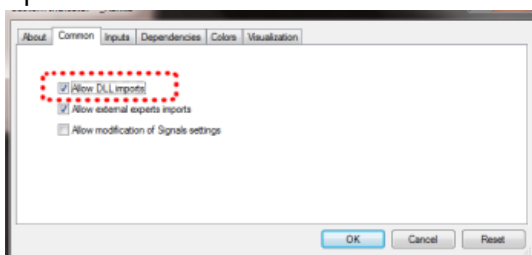


## 2. Using the Gravity indicator

### 2.1 Adding the indicator to a chart

You add the Gravity indicator to a chart in the usual MT4 way, either by dragging it from the Navigator onto a chart, or by double-clicking on it in the Navigator. You can also use standard MT4 features such as adding the indicator to your list of Favorites, or assigning a Hotkey to it.

You need to turn on the “Allow DLL imports” setting in the “Common” tab of the indicator’s options:



## 2.2 Choosing the colours

The Gravity indicator is colour-coded, showing areas of stronger support/resistance in darker colours. You can adjust the colours using the settings on the Inputs tab.

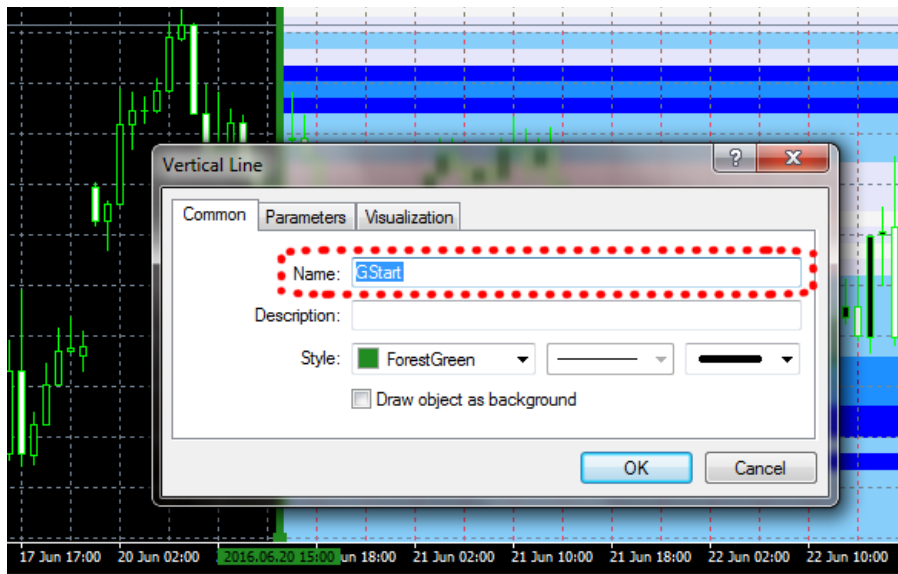
## 2.3 Time period

The Gravity indicator has two modes. By default it will show a relatively long-term assessment of support and resistance. For short-term trading, e.g. intra-day trading using an M5 or M15 chart, you can also use the Inputs tab to tell the Gravity indicator to use a shorter-term calculation.

## 2.4 Start date

By default the Gravity indicator will show a future indication of support and resistance using price activity right up until the current time.

However, you can adjust the indicator's start time by creating a vertical line on the chart and giving it the name GStart, as in the following example:



The indicator will then only use the price action up until the start time, without looking into the future at what subsequently happened, and will draw its support and resistance calculation starting from the line.



You can use this either to test the indicator, seeing how reliable it would have been in the past, or as a way of telling the indicator to ignore recent price activity which you may regard as abnormal and irrelevant. (The spike in the most recent bar in the screenshot at the [start of this document](#) shows the market's anticipation of the UK Brexit referendum in June 2016.)